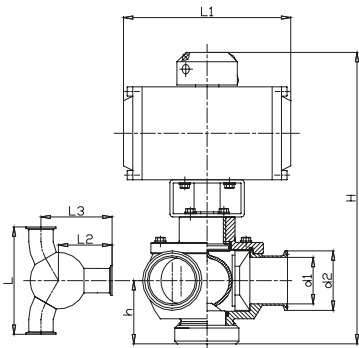
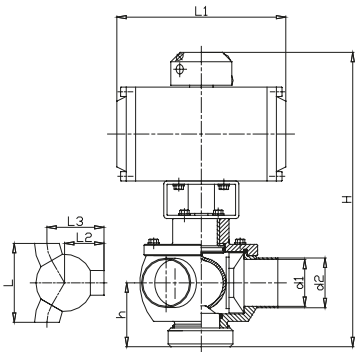
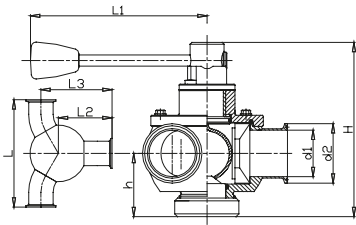
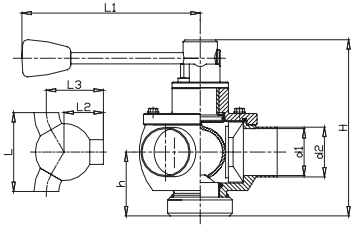


PIG DIVERTER SHUTTER VALVES



Inch

90°/120° pig diverter shutter valve, manual, welded ends

VALVE SIZE inch (mm)	Type	Ø d1	Ø d2	H	h	L	L1	L2	L3
1.50 (38.1)	38CV53M21	1.37 (34.8)	1.50 (38.1)	7.09 (180)	2.56 (65)	5.16 (131)	6.30 (160)	2.58 (65.5)	3.78 (96)
2.00 (50.8)	51CV53M21	1.87 (47.5)	2.00 (50.8)	7.48 (190)	2.76 (70)	6.06 (154)	7.48 (190)	3.03 (77)	4.49 (114)
2.50 (63.5)	63CV53M21	2.37 (60.2)	2.50 (63.5)	7.87 (200)	2.95 (75)	7.80 (198)	7.48 (190)	3.90 (99)	5.43 (138)
3.00 (76.2)	76CV53M21	2.87 (72.9)	3.00 (76.2)	8.46 (215)	3.15 (80)	8.58 (218)	7.48 (190)	4.29 (109)	6.22 (158)
4.00 (101.6)	102CV53M21	3.83 (97.4)	4.00 (101.6)	10.43 (265)	4.33 (110)	11.73 (298)	10.63 (270)	5.87 (149)	8.54 (217)

90°/120° pig diverter shutter valve, manual, TC-clamp

VALVE SIZE inch (mm)	Type	Ø d1	Ø d2	H	h	L	L1	L2	L3
1.50 (38.1)	38CV530M21	1.37 (34.8)	1.99 (50.5)	7.09 (180)	2.56 (65)	6.14 (156)	6.30 (160)	3.07 (78)	4.29 (109)
2.00 (50.8)	51CV530M21	1.87 (47.5)	2.52 (64)	7.48 (190)	2.76 (70)	7.05 (179)	7.48 (190)	3.52 (89.5)	5.00 (127)
2.50 (63.5)	63CV530M21	2.37 (60.2)	3.05 (77.5)	7.87 (200)	2.95 (75)	8.78 (223)	7.48 (190)	4.39 (111.5)	5.94 (151)
3.00 (76.2)	76CV530M21	2.87 (72.9)	3.58 (91)	8.46 (215)	3.15 (80)	9.57 (243)	7.48 (190)	4.78 (121.5)	6.73 (171)
4.00 (101.6)	102CV530M21	3.83 (97.4)	4.69 (119)	10.43 (265)	4.33 (110)	12.72 (323)	10.63 (270)	6.36 (161.5)	9.06 (230)

90°/120° pig diverter shutter valve, pneumatic (air/air), welded ends

VALVE SIZE inch (mm)	Type	Ø d1	Ø d2	H	h	L	L1	L2	L3
1.50 (38.1)	38CV53Ab21	1.37 (34.8)	1.50 (38.1)	12.87 (327)	2.56 (65)	5.16 (131)	7.17 (182)	2.58 (65.5)	3.78 (96)
2.00 (50.8)	51CV53Ab21	1.87 (47.5)	2.00 (50.8)	13.11 (333)	2.76 (70)	6.06 (154)	7.17 (182)	3.03 (77)	4.49 (114)
2.50 (63.5)	63CV53Ab21	2.37 (60.2)	2.50 (63.5)	13.66 (347)	2.95 (75)	7.80 (198)	7.17 (182)	3.90 (99)	5.43 (138)
3.00 (76.2)	76CV53Ab21	2.87 (72.9)	3.00 (76.2)	14.80 (376)	3.15 (80)	8.58 (218)	9.29 (236)	4.29 (109)	6.22 (158)
4.00 (101.6)	102CV53Ab21	3.83 (97.4)	4.00 (101.6)	16.85 (428)	4.33 (110)	11.73 (298)	9.29 (236)	5.87 (149)	8.54 (217)

90°/120° pig diverter shutter valve, pneumatic (air/air), TC-clamp

VALVE SIZE inch (mm)	Type	Ø d1	Ø d2	H	h	L	L1	L2	L3
1.50 (38.1)	38CV530Ab21	1.37 (34.8)	1.99 (50.5)	12.87 (327)	2.56 (65)	6.14 (156)	7.17 (182)	3.07 (78)	4.29 (109)
2.00 (50.8)	51CV530Ab21	1.87 (47.5)	2.52 (64)	13.11 (333)	2.76 (70)	7.05 (179)	7.17 (182)	3.52 (89.5)	5.00 (127)
2.50 (63.5)	63CV530Ab21	2.37 (60.2)	3.05 (77.5)	13.66 (347)	2.95 (75)	8.78 (223)	7.17 (182)	4.39 (111.5)	5.94 (151)
3.00 (76.2)	76CV530Ab21	2.87 (72.9)	3.58 (91)	14.80 (376)	3.15 (80)	9.57 (243)	9.29 (236)	4.78 (121.5)	6.73 (171)
4.00 (101.6)	102CV530Ab21	3.83 (97.4)	4.69 (119)	16.85 (428)	4.33 (110)	12.72 (323)	9.29 (236)	6.36 (161.5)	9.06 (230)