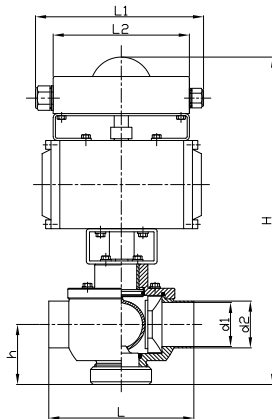


CONTROL SHUTTER VALVES



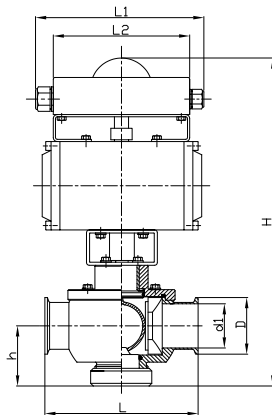
Inch

2-way control shutter valve, pneumatic (air/air - air/spring), welded ends

VALVE SIZE inch (mm)	Type	Ød1	Ød2	H	h	L	L1	L2
1.00 (25.4)	25C52Aep22	0.87 (22.1)	1.00 (25.4)	13.03 (331)	1.97 (50)	4.33 (110)	7.80 (198)	6.06 (154)
1.50 (38.1)	38C52Aep22	1.37 (34.8)	1.50 (38.1)	14.33 (364)	2.56 (65)	5.51 (140)	7.80 (198)	6.06 (154)
2.00 (50.8)	51C52Aep22	1.87 (47.5)	2.00 (50.8)	14.57 (370)	2.76 (70)	6.46 (164)	7.80 (198)	6.06 (154)
2.50 (63.5)	63C52Aep22	2.37 (60.2)	2.50 (63.5)	16.26 (413)	2.95 (75)	8.27 (210)	7.80 (198)	6.06 (154)
3.00 (76.2)	76C52Aep22	2.87 (72.9)	3.00 (76.2)	16.89 (429)	3.15 (80)	8.66 (220)	7.80 (198)	6.06 (154)
4.00 (101.6)	102C52Aep22	3.83 (97.4)	4.00 (101.6)	18.31 (465)	4.33 (110)	12.20 (310)	7.80 (198)	6.06 (154)

Electro-pneumatic control unit consisting of:

- Pneumatic actuator 0°- 90°
- Positioner Positurn 4-20mA (0-10V), 24V DC, IP65



2-way control shutter valve, pneumatic (air/air - air/spring), TC-clamp

VALVE SIZE inch (mm)	Type	Ød1	ØD	H	h	L	L1	L2
1.00 (25.4)	25C520Aep22	0.87 (22.1)	1.99 (50.5)	13.03 (331)	1.97 (50)	5.31 (135)	7.80 (198)	6.06 (154)
1.50 (38.1)	38C520Aep22	1.37 (34.8)	1.99 (50.5)	14.33 (364)	2.56 (65)	6.50 (165)	7.80 (198)	6.06 (154)
2.00 (50.8)	51C520Aep22	1.87 (47.5)	2.52 (64.0)	14.57 (370)	2.76 (70)	7.44 (189)	7.80 (198)	6.06 (154)
2.50 (63.5)	63C520Aep22	2.37 (60.2)	3.05 (77.5)	16.26 (413)	2.95 (75)	9.25 (235)	7.80 (198)	6.06 (154)
3.00 (76.2)	76C520Aep22	2.87 (72.9)	3.58 (91.0)	16.89 (429)	3.15 (80)	9.65 (245)	7.80 (198)	6.06 (154)
4.00 (101.6)	102C520Aep22	3.83 (97.4)	4.68 (119.0)	18.31 (465)	4.33 (110)	13.19 (335)	7.80 (198)	6.06 (154)

Electro-pneumatic control unit consisting of:

- Pneumatic actuator 0°- 90°
- Positioner Positurn 4-20mA (0-10V), 24V DC, IP65