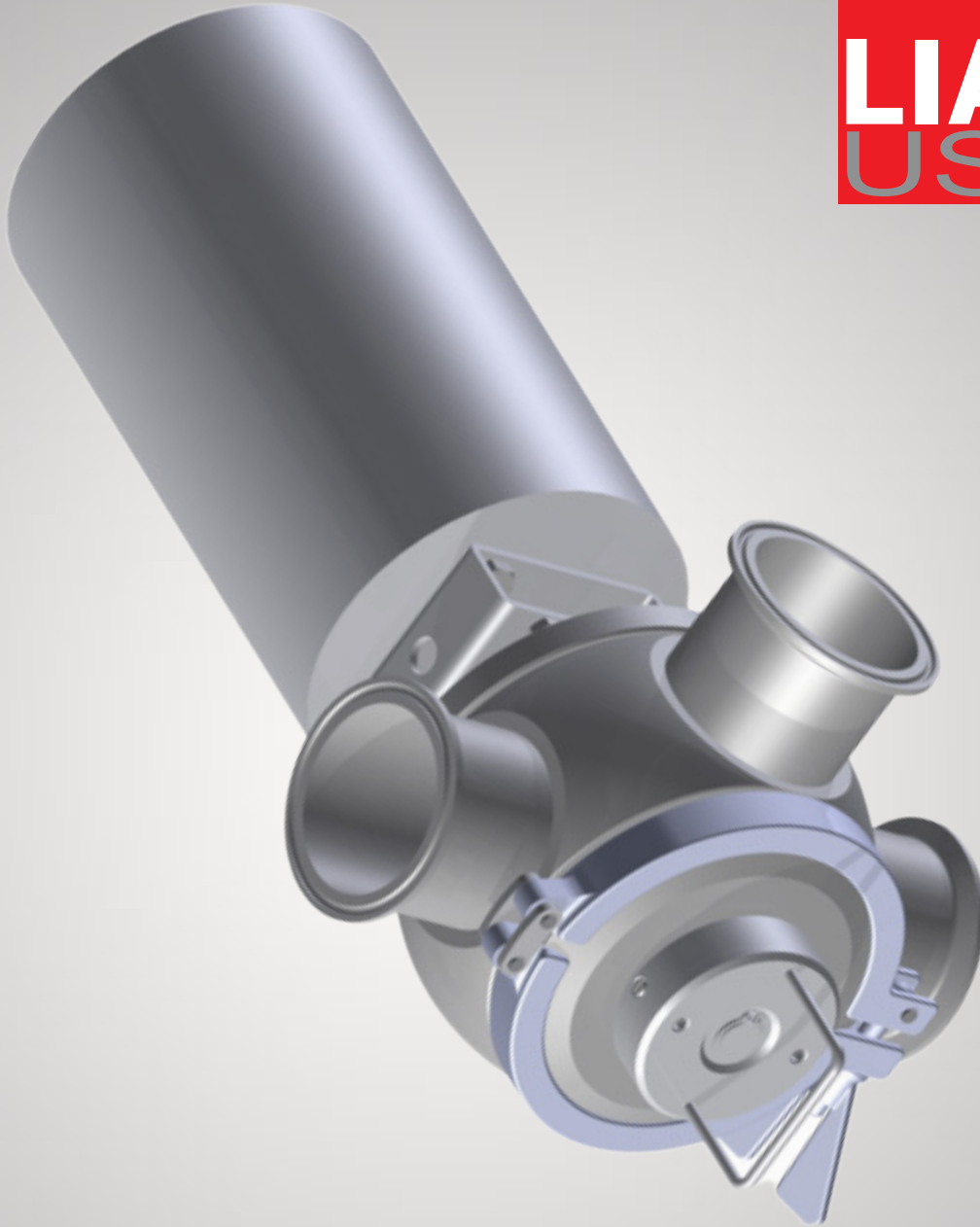


**LIAG**®  
USA



**LAUFER**  
Valve Technology Inc.

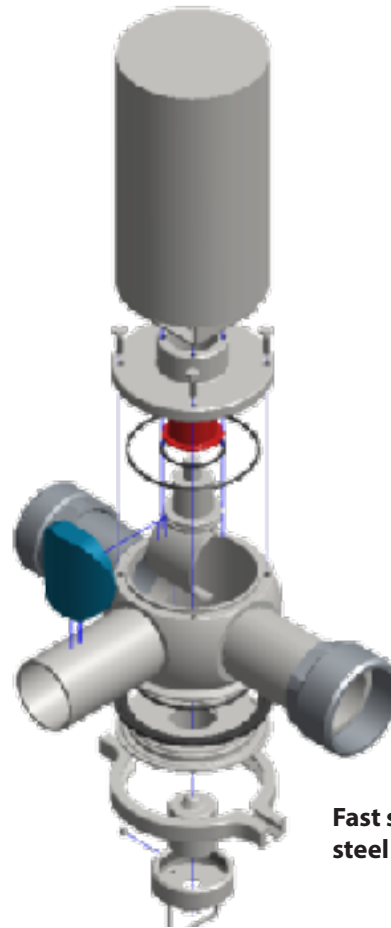
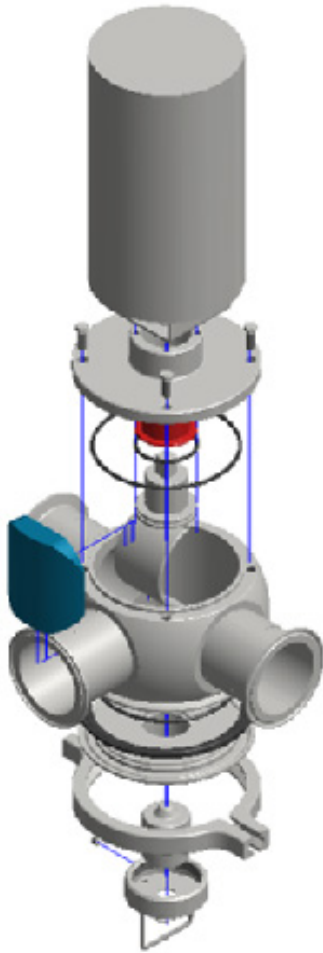
**EASY-OPEN Arc Valve for the meat industry**

# EASY-OPEN Arc Valve for the meat industry

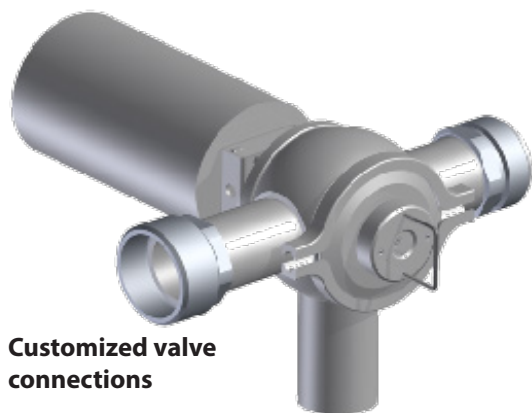
LIAG® EASY-OPEN arc valves are specially designed as reliable component of inline metal detectors and process lines in the meat industry without CIP Cleaning. This valve performs easy and quick opening with excellent cleanability.

## Features

- Hygienic design - no dead pockets
- Totally clear passage - no pressure loss
- Minimum number of components and wearing parts
- EASY OPEN design for fast opening even when built in



**Fast switching stainless steel actuators**



**Customized valve connections**

# Technical data

## Nominal sizes

DIN DN50 - DN80 / SMS DN51 - DN76 / Inch 2" - 3"

## Materials

Inox parts in contact  
with product: AISI 316L (1.4404 / 1.4435)  
Other inox parts: AISI 304 (1.4301)  
O-ring seals: EPDM, FKM (Viton®), FEP,  
other grades upon request  
Shutter: PTFE

For meat paste with eventual residues of abrasive particle of  
e.g. bones we recommend to use the glassfibre-reinforced  
Teflon (GL25).

## Surfaces

In contact with product:  $Ra \leq 0,8 \mu\text{m}$  ( $Ra \leq 32 \mu\text{in}$ )

## Temperature

Operating temperature: 110°C (230°F)  
Short-term: 140°C (284°F)  
- optionally up to 200°C (392°F)

## Operating pressure

Pressure behind arc: 10 bar (145 psi)  
- optionally up to 20 bar (290,1 psi)  
Pressure against arc: 3 bar (43,5 psi)

## Valve connection

Welded ends: DIN, SMS, Zoll  
Male ends: DIN 11851, SMS 1145  
Clamp connection: Tri-Clamp  
Others: upon request

## Further options

- Shutter material; alternatively: Tecapeek®,  
PTFE+15% Peek
- Combination of different types of connection
- Delivery and adaptation to actuators of different  
manufacture per Namur NE14 and DIN EN ISO5211

LAUFER Valve Technology Inc., 2300 Walnut Ave, Suite Q-R, Signal Hill, CA 90755

T: +1.562.232.4777 - sales@laufer-valve.com - www.laufer-valve.com

